

SV2000 Software Installation Manual

Version 1.2

June. 2008

CD Contains:

SV2000 V1.2 Software
Installation Kit Driver

System Requirements:

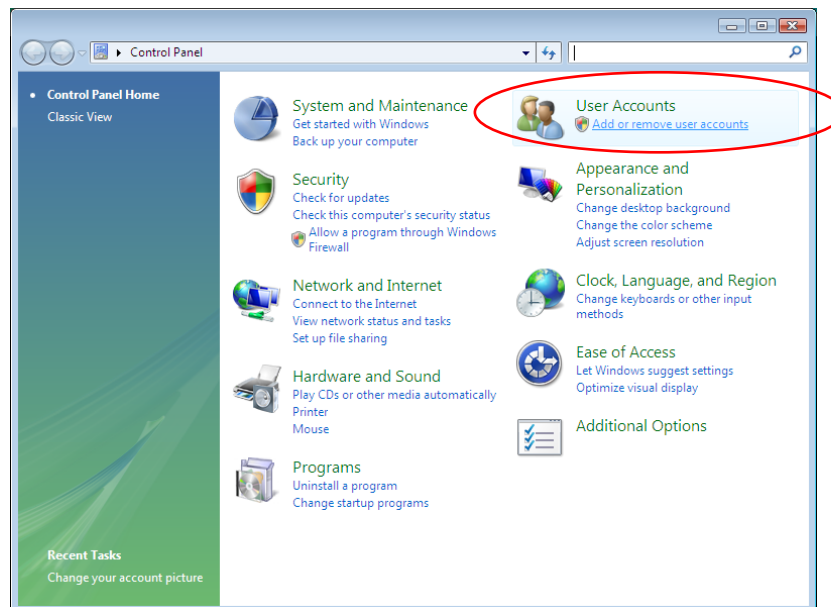
Recommended Pentium 4 or higher or other compatible machines.

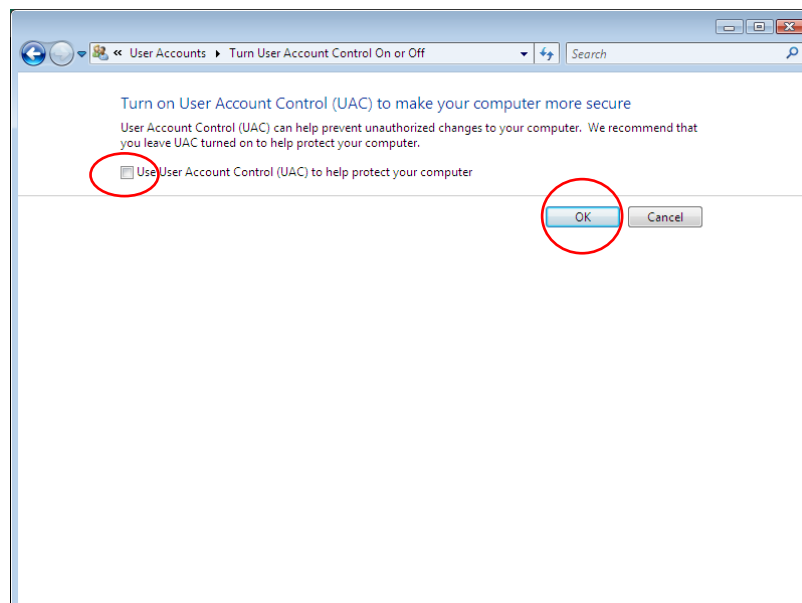
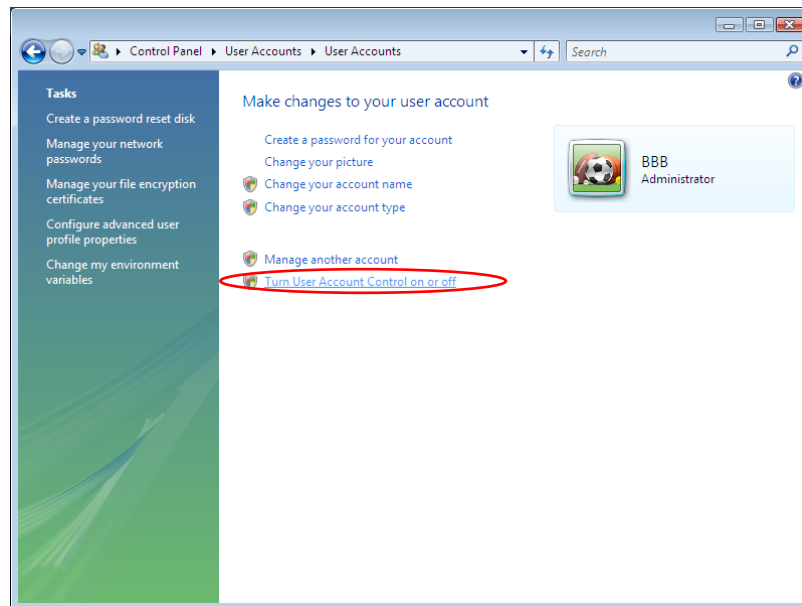
Recommended RAM of at least 512 MB or higher.

One of following operating system:

Windows: XP / Vista

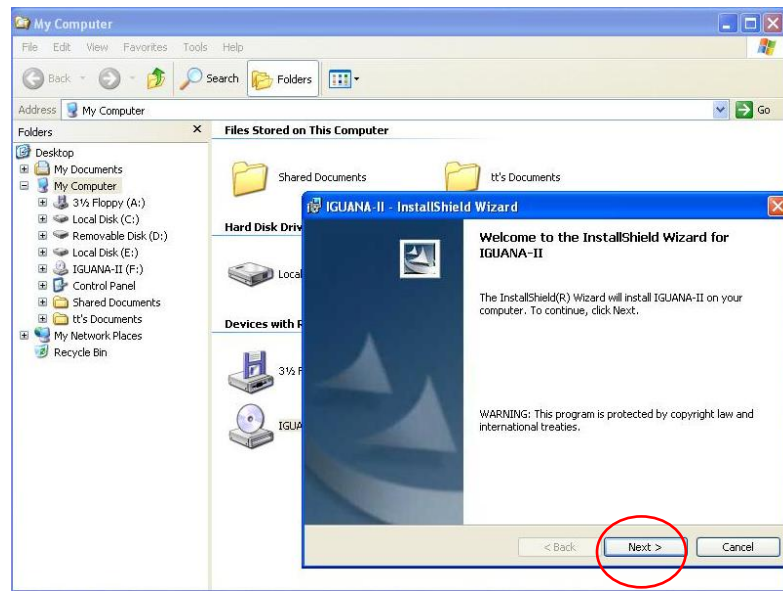
Note: When using Windows Vista OS system, please **turn “User Account Control” (UAC) off** before installing SV2000 V1.2 software. Don’t turn on (UAC) again when running SV2000 V1.2 program.



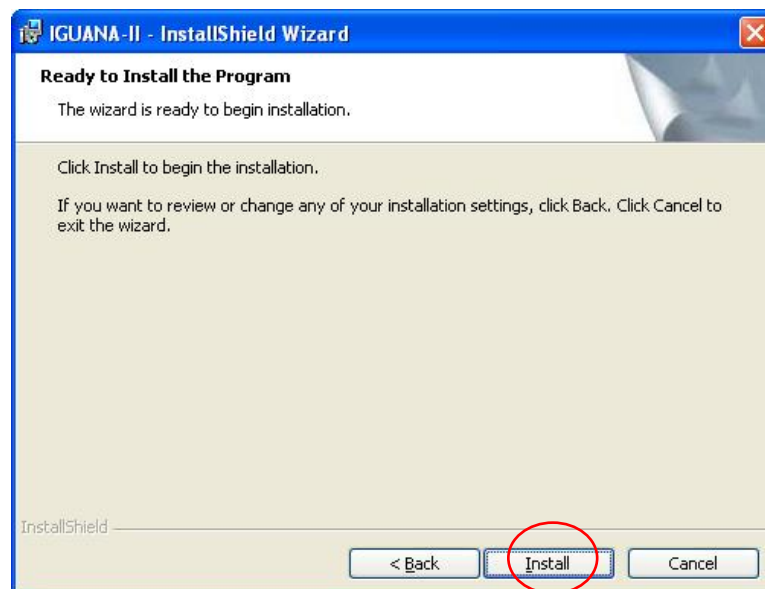


Installation Step

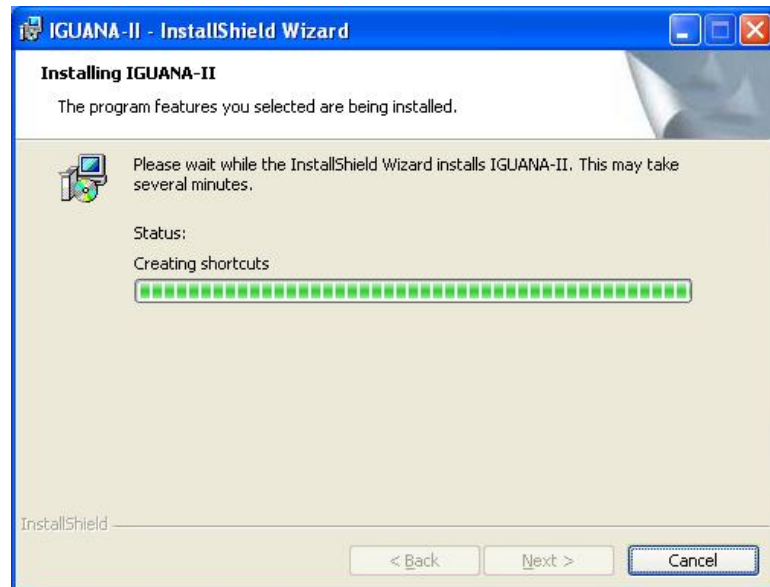
Step 1. Execute IGUANA SV2000 V1.2 CD



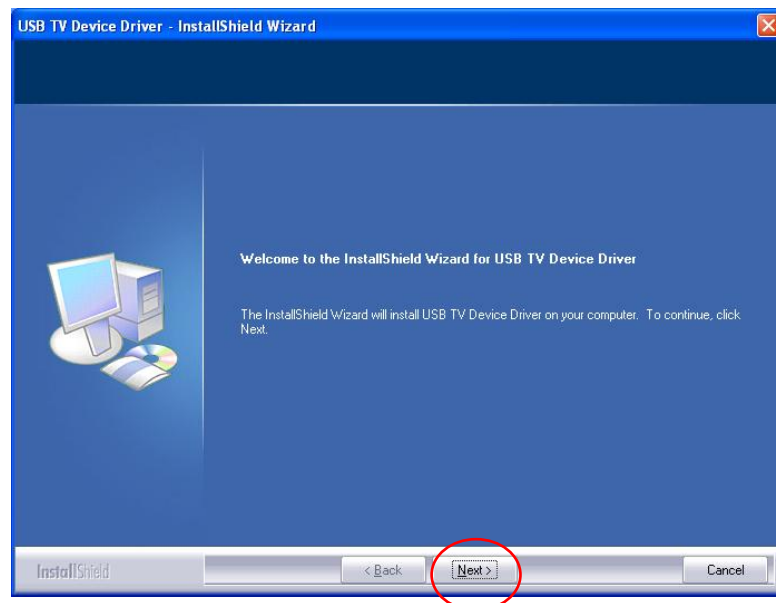
Step 2. Execute Install Wizard

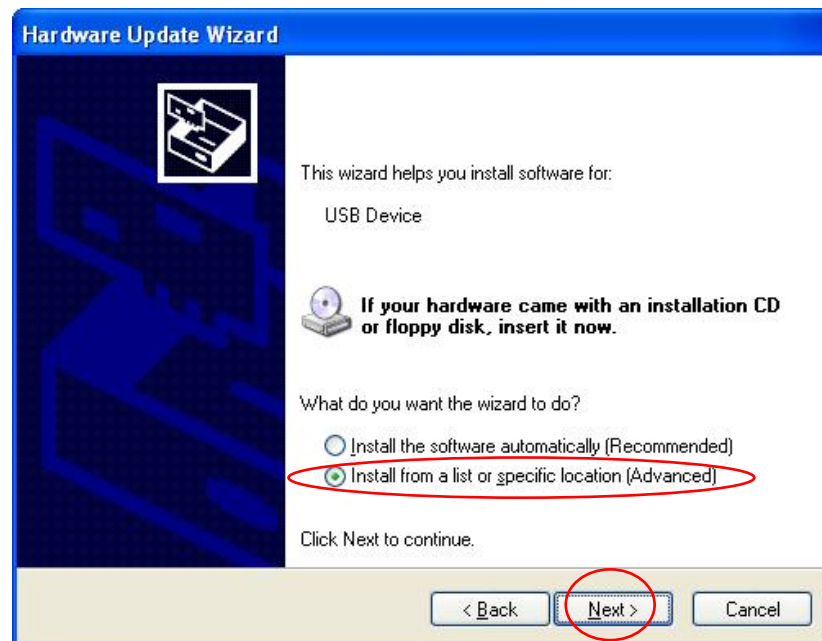
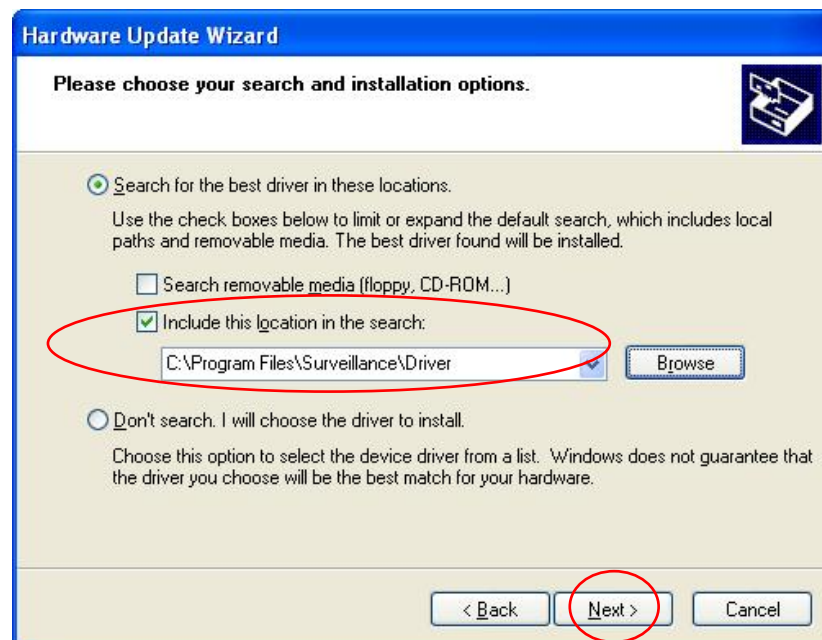


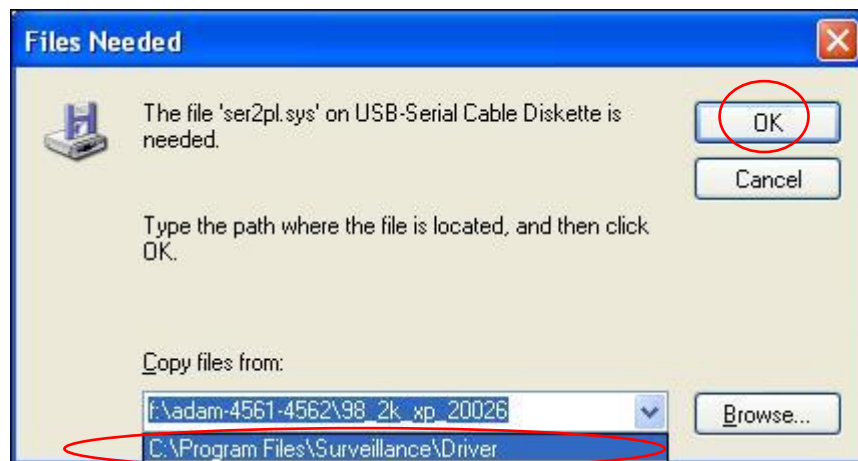
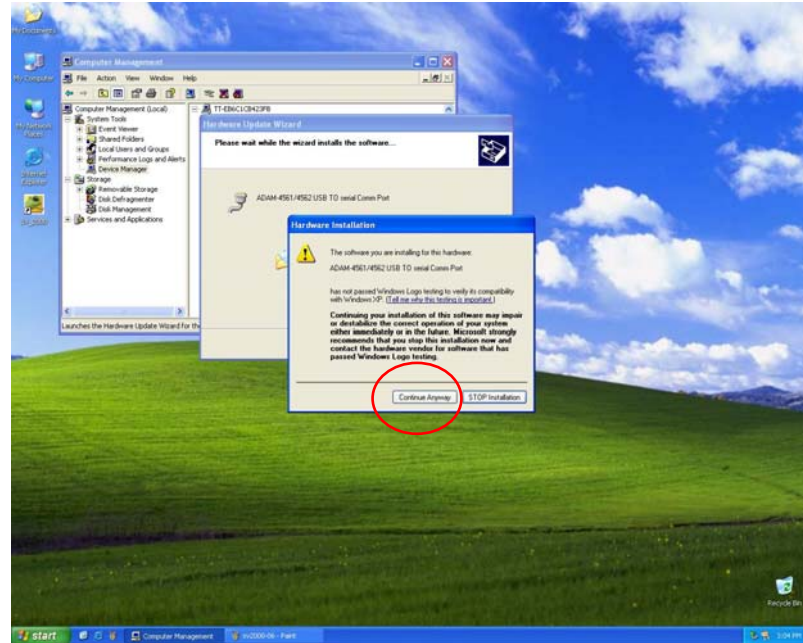
Step 3. Installing



Step 4. Install USB TV Device Driver

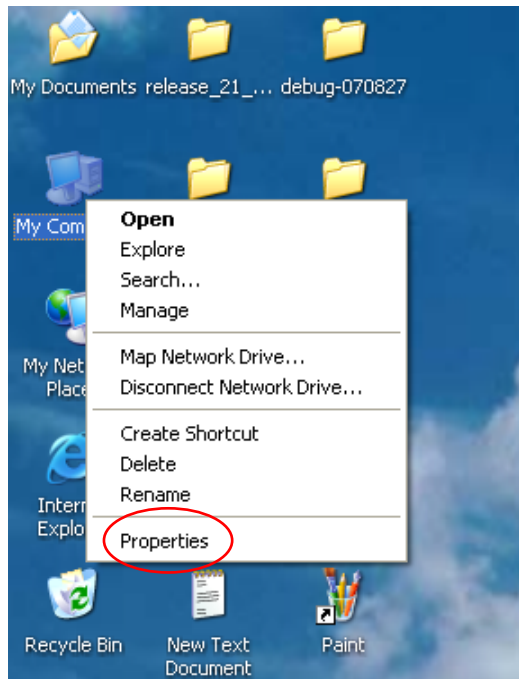


Step 5. Install ADAM-4561 USB to serial port driver**Step 6. Find the driver path**

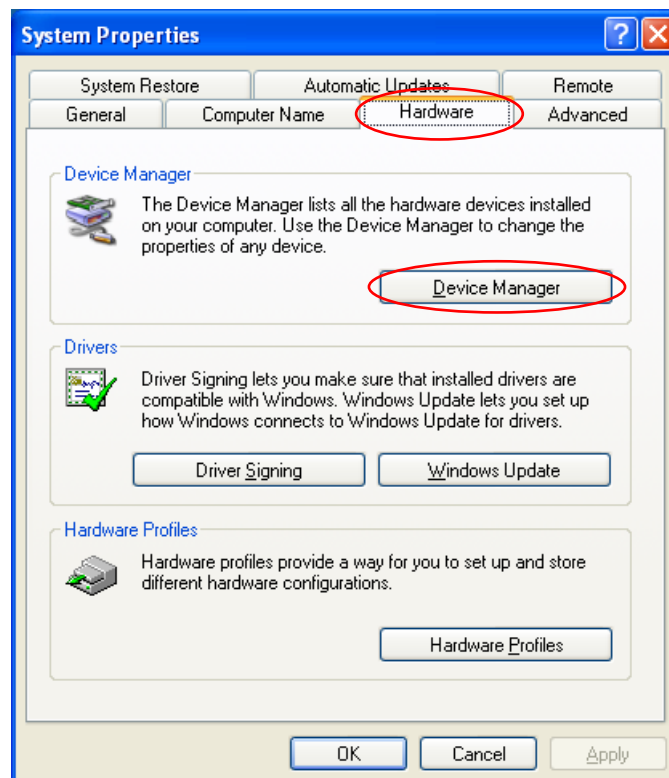


Step 7. Check the driver

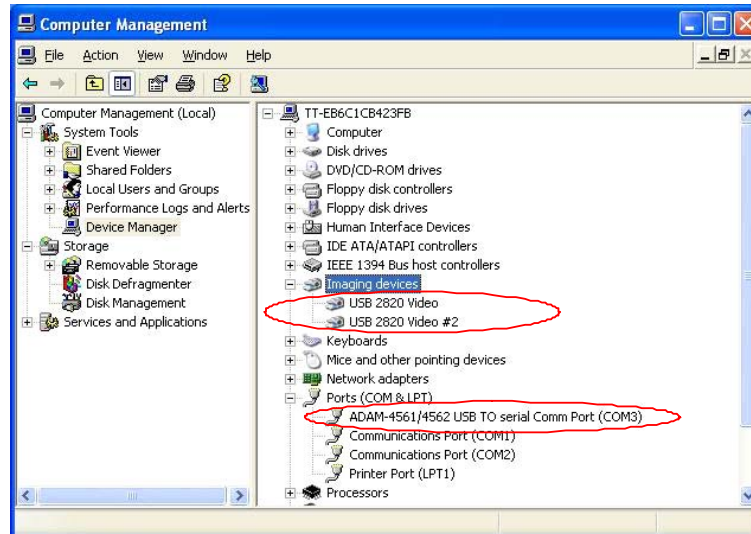
- a. Right Click on **My Computer**→**Properties**



- b. Select **Hardware**→**Device Manager**



- c. Check for **Imaging devices**→**USB 2820 Video** and **Ports(COM & LPT)** →**ADAM-4561/4562 USB To serial Comm Port**



Step 8. Restart PC